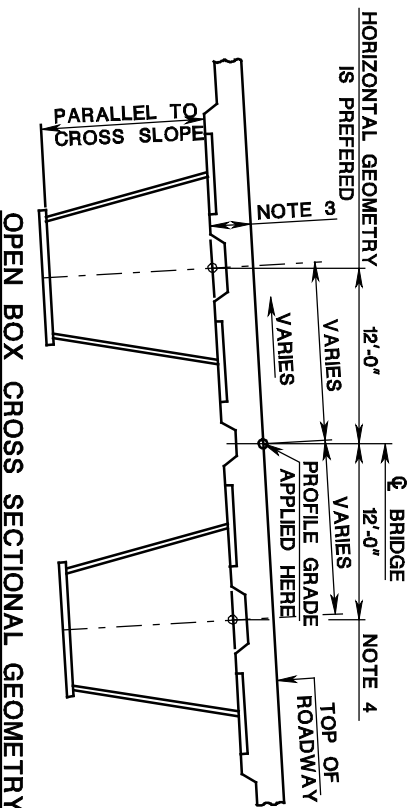
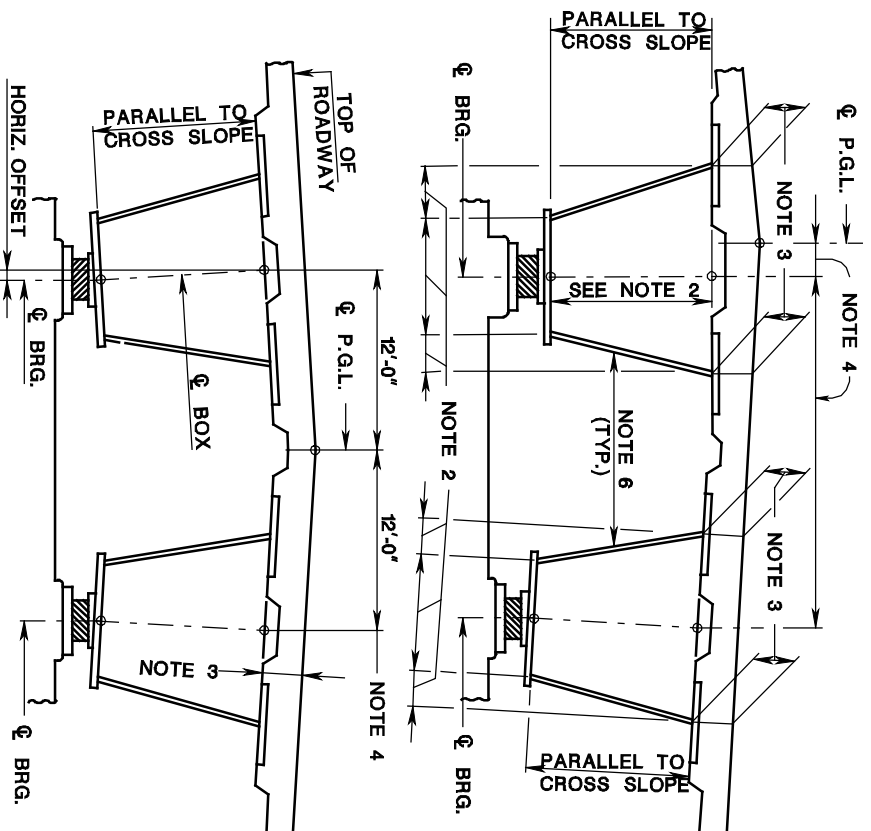


# TUB GIRDER (OPEN BOX) DETAILS (SHEET 1 OF 3) CROSS SECTIONAL GEOMETRY

ISSUED: 2009

PLATE  
3.9-8



## NOTES:

1. ROTATE BOX WITH CROSS SLOPE.
2. MAINTAIN CONSTANT TRAPEZOIDAL SHAPE (DEPTH MAY VARY WITH HAUNCH).
3. MAINTAIN CONSTANT CONCRETE HAUNCH.
4. HORIZONTAL STATION OFFSETS PREFERRED.
5. FOLLOW CENTERLINE ALIGNMENT EVEN THROUGH A SPIRAL CURVE.
6. THE WEB INCLINATION SHALL NOT EXCEED 1 TO 4 (1:4).